

Dear Valued Supplier:

Your company has been identified as a supplier to Sysco/FreshPoint and Sygma. We would like to take this opportunity to inform you of the recent changes to the Sysco/FreshPoint/Sygma Good Agricultural Practices program. The changes apply to all Tier1 and 2 level produce suppliers (See appendix 3) regardless of brand and label supplied to all our Sysco owned and operated companies.

1. All audits must be from the accepted audit schemes listed in Appendix 1 & 2 and completed by approved certification auditing companies.
2. Those suppliers whom are required to comply with FDA's Food Safety Modernization Act (FSMA) must include the appropriate FSMA Preventive Controls or Produce Rule addendum with their audit to be deemed compliant unless your company falls under the exemption rules outlined in FSMA. For more information regarding FSMA and the Produce Rule you can access the information by clicking on the link below:
<https://www.fda.gov/food/food-safety-modernization-act-fsma/fsma-rules-guidance-industry#guidance>
<https://www.fda.gov/food/guidance-regulation-food-and-dietary-supplements/food-safety-modernization-act-fsma>
3. If selecting the current PrimusGFS version as your scheme of choice the FSMA addendum is not required as all requirements are included in the audit content.
4. All audits must be entered by the third-party certification body (CB) via the Azzule Auditing Software and transferred to Sysco/FreshPoint via the Azzule Supply Chain Program for compliance.
5. Audit results will no longer be accepted via PDF method from suppliers directly.
6. Small farmers and local growers can achieve overall compliance by completing a Sysco approved Non-GFSI Recognized Scheme found on Appendix 2.
7. All Tier 1 and 2 commodities must now be accompanied with an approved GMP audit of the packing facility, cooler and/or distribution center if applicable (For a list of examples of items of Tier 1 and 2, please refer to Appendix 3).

Once the audit has been uploaded by the third-party CB, suppliers can then access the audits and send them to Sysco/FreshPoint using the Azzule Supply Chain Program.

We understand that you and your suppliers utilize potentially different auditing companies/CBs and audit schemes. To make reporting entry as seamless as possible for all parties involved, please refer to the simple steps below:

- Ensure that you register or already have an Azzule account and have access to the Supply Chain Program³
- Ensure that all your auditing companies/CBs are using Azzule Auditing Software². This allows them to submit audits into the database directly posting to your Azzule account.
- Auditing companies/CBs will need to verify that the audit scheme/templates which they are using are available and supported by the Azzule Auditing Software. This is required to submit the audits into the database correctly. If not, supported audits will not be accepted into the system and compliance will not be generated possibly resulting in disruption of business opportunities.
- Please ensure audits are transferred to Sysco/FreshPoint via the Azzule Supply Chain Program in order to achieve full compliance.

All technical questions concerning the Sysco/FreshPoint Good Agricultural Practices Program should be directed to:

- Dave Podesta, Director Sysco/FreshPoint Quality Assurance, 831-970-5278
- Francisco Duran, Program Quality Manager Sysco Produce Quality Assurance, 831-970-5276
- Shane Sampels, Senior Director Sysco/FreshPoint/RTS Corporate Quality Assurance, 281-584-1313

We thank you for your cooperation and participation.

Sincerely,



Mark Mignogna
Vice President Quality Assurance



Julie Olivarria
Vice President Produce

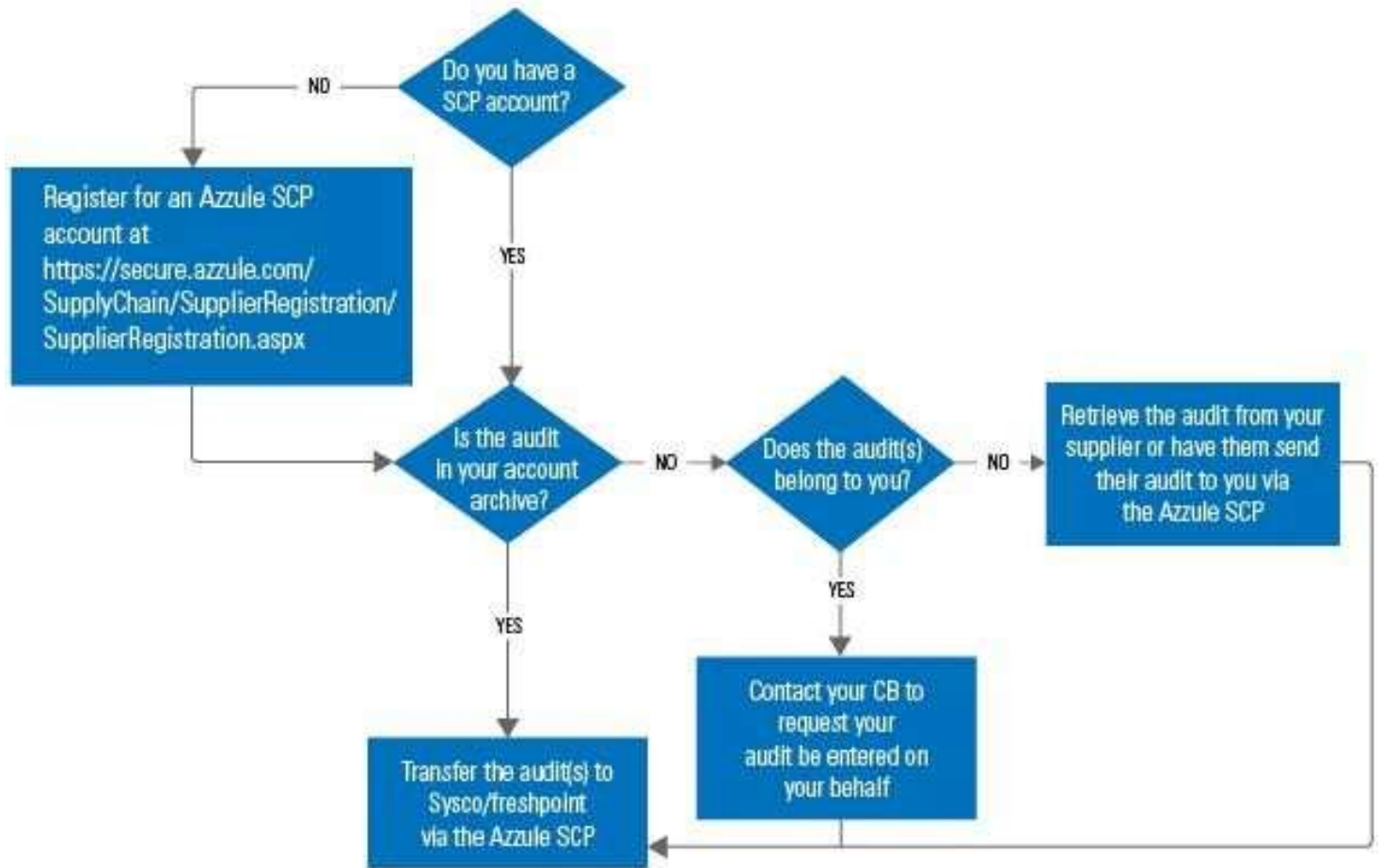
- 1.) Instructions for using Azzule can be found here: <http://azzule.com/docs/AZ-PSCP-M-4-Azzule%20Premium%20Supply%20Chain%20Program%20Quick%20Reference%20Guide-v1-04122017.pdf>
- 2.) Information for using Azzule Auditing Software can be found here: <http://azzule.com/auditingsoftware/faq/>
- 3.) Register for Azzule here:
<https://secure.azzule.com/SupplyChain/SupplierRegistration/SupplierRegistration.aspx>

Compliance Requirements and Process

| Supplier Type | Product Type | GAP Audit | GMP Audit | GMP with HACCP Audit | Score Requirement | Approved Certification Bodies | Audit Timeline | Audit Submission |
|--|---------------------------------------|-----------|-----------|----------------------|------------------------|-------------------------------|---|---|
| Raw Agricultural Commodity Suppliers | Tier 1 <i>(see appendix 3)</i> | ✓ | ✓ | | 90% or above | <i>See Appendix 1</i> | Suppliers must provide updated audits every 12 months - with a three-month grace period | Valid GAP/GMP audits must be entered by the Certification Body and <i>transferred to Sysco/Freshpoint via the Azzule Supply Chain Program (see process below)</i> |
| | Tier 2 <i>(except sprouts)</i> | | ✓ | | | | | |
| | Mushrooms | ✓ | | ✓ | | | | |
| | Sprouts | | | ✓ | | | | |
| Fresh Cut Produce and Deli Salad Suppliers | All Fresh Cut Produce and Deli Salads | ✓ | ✓ | | | | | |

Table 2. Audit Submission Process

**Azzule members – please refer to the following flow diagram:*



Azzule SCP Registration: <https://secure.azzule.com/SupplyChain/SupplierRegistration/SupplierRegistration.aspx>

APPENDIX 1 – Sysco Accepted GFSI Audit Schemes

The following Audit Schemes have been approved and meet the requirements of Sysco's GAP & GMP Audit Program. Prior to conducting your audit, please verify that your certification body is accredited and currently approved to conduct the audit checklist you are requesting. Below are links for the approved certification bodies for each GFSI audit type.

GFSI Recognized Schemes:

BRC Global Standard for Food Safety

Thomas Owen

E-mail: enquiries@brglobalstandards.com

Phone: +44-20-7854-8939

[Approved CBs](#)

GLOBALG.A.P. (PHA)

3519 NE 15th Ave. #521

Portland, OR 97212, USA

info@globalgap.org

[Approved CBs](#)

CanadaGAP

Heather Gale

E-mail: offs@hortcouncil.ca

Phone: +1-613-226-4880, ext. 215

[Approved CBs](#)

PrimusGFS

Courtney Cox

Email: primusgfs@azzule.com

Phone: +1-805-354-7127

[Approved CBs](#)

GLOBALG.A.P. (IFA)

Elme Coetzer

E-mail: coetzer@globalgap.org

Phone: +27-0-826- 628 -105

[Approved CBs](#)

SQF Institute

Leann Chuboff

E-mail: info@sqfi.com

Phone: +1-202-220-0635, Fax: +1-202-429-4519

[Approved CBs](#)

GLOBALG.A.P. (HPSS)

3519 NE 15th Ave. #521

Portland, OR 97212, USA

info@globalgap.org

[Approved CBs](#)

USDA Harmonized GAP+ (USDA)* (either as an individual or GroupGAP option)

Washington, D.C

Phone: +1-202-720-4560

[Approved CBs](#)

The approved scopes and audit versions for each GFSI scheme can be found at the GFSI webpage:

<https://mygfsi.com/how-to-implement/recognition/certification-programme-owners>

**The USDA Harmonized GAP+ template has a GFSI technical equivalence benchmark:*

<https://www.mygfsi.com/certification/technical-equivalence.html>

APPENDIX 2 – Sysco Accepted Non-GFSI Audit Schemes

Prior to conducting your audit, please verify that your certification body is accredited and currently approved to conduct the audit checklist you are requesting. Below are links for the approved certification bodies or a direct link to request an audit if only one certification body can conduct the audit.

Non-GFSI Recognized Schemes:

Connecticut GAP

450 Columbus Blvd. Suite 701
Hartford, CT 06103
<https://portal.ct.gov/DOAG>
Phone: +1-860-713-2500
[Request Audit](#)

GLOBALG.A.P. (PSS)

3519 NE 15th Ave. #521
Portland, OR 97212, USA
info@globalgap.org
[Approved CBs](#)

GAPs Harmonized Standard

1901 Pennsylvania Ave. Suite 1100
Washington, D.C. 20006
Phone: +1-202-303-3400
[Approved CBs](#)

Massachusetts Department of Agricultural Resources Produce Safety Program

Boston, MA 02114
www.mass.gov/cqp
Phone: +1-617-626-1721
[Request Audit](#)

NSF On-Farm Produce Audit

infoag@nsf.org
Phone: +1-866-834-2516
[Request Audit](#)

Primus Standard Audit

Primus Standard GAP & GMP
primusstandard@primuslabs.com
Phone: +1-805-354-7127
[Approved CBs](#)

United States Department of Agriculture (USDA)

USDA Harmonized GAP (Individual or GroupGAP)
USDA GAP & GHP
Washington, D.C.
Phone: +1-202-720-456
[Request Audit](#)

APPENDIX 3 – High-Risk GAP Commodities (Tier 1 and Tier 2 Examples)

All High-Risk Raw Agricultural Commodities:

Tier 1 Produce:

Berries (e.g., raspberries, strawberries, etc.)
Brassicas (e.g., broccoli, cauliflower, cabbage, etc.)
Celery
Cucumbers
Cucurbit fruit (e.g., melons)
Culinary herbs (e.g., cilantro, lemongrass, parsley, etc.)
Green onions/salad onions/scallions
Leafy greens (e.g., chard, lettuce, spinach, etc.)
Microgreens
Mushrooms
Peppers (e.g., bell peppers, chili peppers, etc.)
Summer squash (e.g., patty pan, zucchini, etc.)
Tomatoes
Sprouts

Tier 2 Produce:

Deciduous Tree Crops (citrus, stone fruit, tree nuts)
Root crops (potatoes, onions, carrots)
Tropical Fruit (pineapples, papayas, mangoes, etc.)